

**Data Sheet of the Groasis Terracedixx**  
**Part of the Groasis Ecological Water Saving Technology**  
[Check the video to see how it works here](#)

The Groasis Terracedixx makes approximately 15 km of mini-terraces (swales) per hour. This helps rise the infiltration of rainwater in dry seasons from app. 25% to 90%. There are 3 cutting discs for cutting organic material, 3 subsoilers making 3 grooves, 2 hollow discs make a small ridge above the lowest groove and a small canal above the middle groove. The top groove helps penetrating the rainwater into the soil.

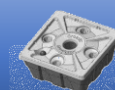
The machine offers the possibility to immediately sow on the ridge (Creeping Alfalfa / Miscanthus - Elephant grass and all kinds of other drought resistant grasses / Cannabis sativa - Industrial hemp (although this is not marijuana, it may be illegal in some countries to sow this) / Oil seed / Radish / Japanese Millet / etc.). A heavy drum presses the seed into the ridge to improve capillary for stimulating the germination.



Groasis Terracedixx immediately sows seeds of herbs on the terraces.



Groasis Terracedixx to create 15.000-meter terraces per hour.



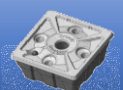


### Functionalities

|                           |                             |
|---------------------------|-----------------------------|
| Color of frame            | Red                         |
| Color of mounted parts    | Green                       |
| Color of discs            | Black                       |
| Dimensions L x W x H (mm) | 4690 x 2000 x 1450          |
| Weight                    | 1650 kg                     |
| Hitch point CAT 2 and 3   | Upper $\varnothing$ 25 – 32 |
| (3 point)                 | Lower $\varnothing$ 28 – 36 |
| Frame constructions tubes | 120 x 60 x 6.3 cm           |
|                           | 100 x 100 x 8 cm            |

### Concept

|                                      |   |
|--------------------------------------|---|
| 3 discs for cutting organic material | 3 rows – distance 400 mm  |
|                                      | Center width 400 mm (2x)  |
|                                      | Disc $\varnothing$ 510 mm   |
|                                      | Security against stones: in up direction with spring  |
|                                      | Depth under lower hitch point 340 or 390 (mm)   |
| 3 Subsoiler-dents                    | 3Rows – distance 400 mm   |
|                                      | Center width 400 mm (2x)  |
|                                      | Security against stones: with hydraulic cylinders and pressure regulation and hydraulic accumulator |
|                                      | Depth adjustable  |
|                                      | Angle adjustable  |
|                                      | Depth under lower hitch point 430 or 500 (mm)   |
| First hollow disc plough             | $\varnothing$ 660   |
|                                      | Pivotally with hydraulic cylinders  |
|                                      | Able to left – right ploughing  |
|                                      | Security against stones with hydraulic cylinder: pressure regulation and hydraulic accumulator      |
|                                      | Disc angle adjustable (vs driving direction)  |
|                                      | Depth under lower hitch point 390 (mm)  |
| Second hollow disc plough            | $\varnothing$ 710   |
|                                      | Pivotally with hydraulic cylinders  |
|                                      | Able to left – right ploughing  |
|                                      | Distance between first and second disc: 930 mm  |
|                                      | Security against stones with hydraulic cylinder: pressure regulation and hydraulic accumulator      |
|                                      | Disc angle adjustable (vs driving direction)  |
|                                      | Depth under lower hitch point 415 (mm)  |
| Sower machine (seeder)               | GANDY P45 Forage  |
|                                      | Command electrical 12VDC (motor drive)  |
|                                      | Sowing on the ridge   |
|                                      | Position of seeding nozzle changes  |
|                                      | (left – right) with hydraulic cylinder  |
|                                      | According to ploughing direction  |





|                                   |   |
|-----------------------------------|---|
| Diabolo drum (double)             | Presses the seed into the soil of the ridge to stimulate germination with a better capillary without changing the form of the ridge |
| Working depth regulation wheels   | Wheel Ø 500 x 150 steel (2x)  |
| Required power                    | 120HP – 88 kw   |
| Electrical (seeder)               | 12VDC – 4A  |
| Hydraulic lifting system          | Standard  |
| Hydraulic coupling system machine | Operating pressure max. 50 bar (700 psi)  |

Groasis plant instructions online

Planting manual  
 الزراعة دليل  
 रोपण के मैनुअल  
 種植手冊  
 Mwongozo wa kupanda  
 Dikim el kitabi  
 Manual de siembra  
 Manual de plantação  
 Manuel de plantation  
 Handleiding om te planten

